



ST. CLAIR

COLLEGE

Interior Design Program

LIBRARY ReDESIGN PROJECT 2023F

IND511 Drafting & Design V
Faculty Patrick Redko

3rd Year Students:

Kayleigh Boyle

Ashley Bradbury

Steph Bruce

Sarah Sanders



Libraries are a quiet and calm space to focus on work, or to just unwind in a safe place. Libraries are also timeless, they hold generations of stories, research, and documents. Willow trees are the same, they live many years and stay strong. They also provide lots of shelter that gives a safe and comforting feeling. Being near a willow tree helps to make people feel at ease and relaxed. Willow Trees are also symbolic of flexibility, adaptability, and rebirth. These ideas relate to a library space where students and staff need a place to feel calm, study in a quiet space, and to complete work. This is everything a library needs to be a beneficial space to students and staff. This library concept is a willow tree, elements from the willow tree such as calmness and peace will make this design strong. Using elements and principles such as movement, shape, texture, and variety will be implemented to the space to relate back to the concept, Willow Tree.



ROOM SCHEDULE

- 101 ENTRY / EXIT
- 102 COFFEE NOOK
- 103 STAFF ROOM WITH KITCHENETTE
- 104 STAFF OFFICES
- 105 RECEPTION
- 106 OPEN COLLABORATIVE SPACE
- 107 PRIVATE COLLABORATIVE SPACE
- 108 DISPLAY AREA/ TOY RESOURCES/ KIOSK
- 109 BOOTH SEATING STUDY SPACE
- 110 BOARD ROOM
- 111 I.T SERVICES
- 112 UNIVERSAL WASHROOMS
- 113 WELLNESS AREA
- 114 OPEN STUDY SPACE
- 115 ARCHIVE AND TOY RESOURCES
- 116 GAMES

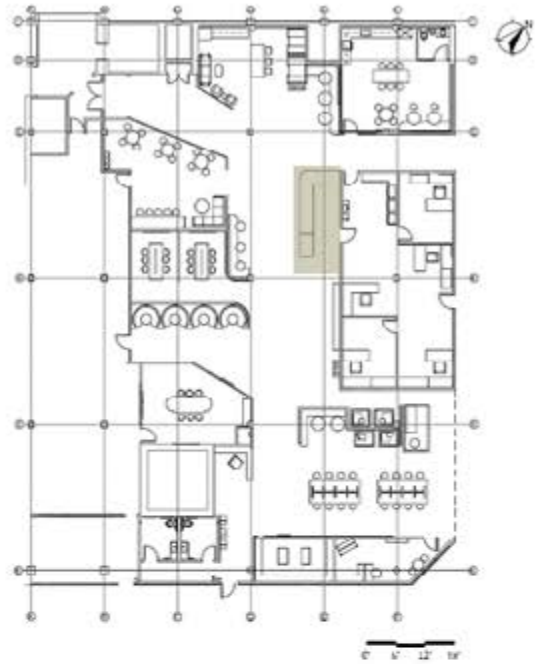
ZONES

- PRIVATE
- WORK -
- SOCIAL -



0 6 12' 18'





reception
side view
render



titania lighting -
ultra thin A lock led
water downlight





office render



blanchers
oak plank
- beige

oak
defender
wallcovering
& juniper -
caramel

york allura
acoustic
ceiling
covering -
pavlo

york tribuna
acoustic
wallcovering
ceiling -
hunan

armstrong
ceiling
saffron -
white and
flame

argonal column
acoustic panel -
natural oak with
gray felt
backing

steelcase
wicker desk
top finish -
dove oak

steelcase
wicker desk
face finish -
milk glass

3form
textured
ceiling window
- dove

steelcase
ceiling
background
fabric -
arrow



tribuna lighting -
ultra thin 4 inch led
wafer downlight



Steelcase slim leg height -
adjustable desk



steelcase - currency desking
system

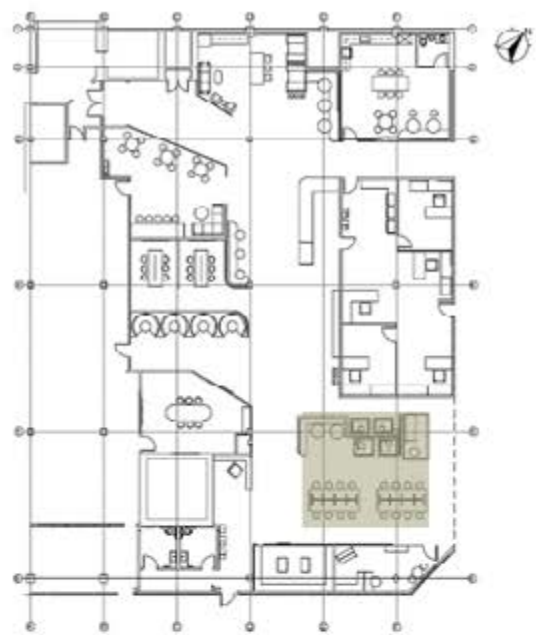


Steelcase office
chair - aria - aria
air



office





0 6 12 18

open study area / wellness area render



1-1) carpet tile
staining - meadow



york allegro acoustic ceiling covering - pebble



york defender - ultra white g - system



steelcase - custom - wood wall panel - desert oak



crane surface solutions - ultra - acoustic glass panels



steelcase - concept lounge system



global wind linear 3 seater - arrives sofa in large pod - in olive upholstery



steelcase - tall guest chair



lithonia lighting - ultra thin 4 inch red water downlight



steelcase all 3 - pods



steelcase on the go workstation

INTRIX

