

Mary Li

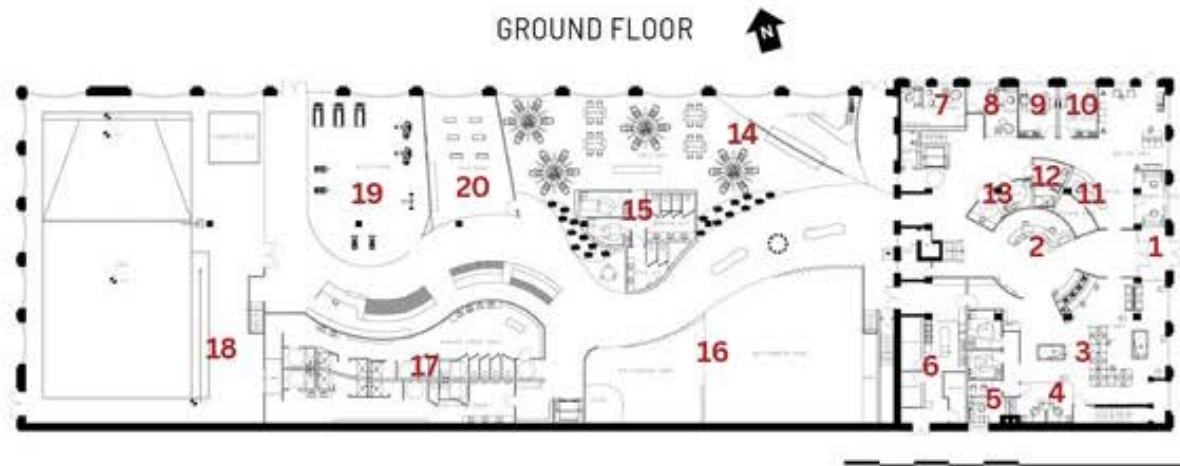


Designers share a collective responsibility to occupants, society, and the environment. I prioritize sustainable design principles in all projects and ensure occupants' well-being indoors. I draw inspiration from utilizing existing local resources and blending innovative elements with natural materials to create a comfortable environment. Respect for cultural heritage and traditions is paramount, integrating ancient techniques into modern designs for a captivating fusion.



The Polaris Project is a facility that provides support and guidance for veterans transitioning to civilian life. Drawing inspiration from the North Star, Polaris offers a nurturing environment where veterans can find solace and purpose, supported by a close-knit community. Through personalized assistance, the project aims to streamline access to essential services and alleviate bureaucratic challenges. By providing comprehensive support, the Polaris Project empowers veterans to embark on transformative journeys toward brighter tomorrows, honoring their sacrifice and uplifting their spirits as they forge new paths in civilian life.





- | | | | |
|--------------------|------------------|---------------------------------|-----------------------|
| 1 MAIN ENTRANCE | 6 KITCHEN | 11 NURSE STATION & WAITING AREA | 16 MULTIPURPOSE ROOMS |
| 2 RECEPTION | 7 THERAPY ROOM 1 | 12 INTAKE ROOM | 17 CHANGING ROOMS |
| 3 BILLIARD AREA | 8 THERAPY ROOM 2 | 13 W/C | 18 POOL |
| 4 OFFICE | 9 EXAM ROOM 1 | 14 CAFETERIA | 19 WEIGHT ROOM |
| 5 MANAGER'S OFFICE | 10 EXAM ROOM 2 | 15 W/C | 20 YOGA ROOM |



FOCUSED AREA: RECEPTION





FOCUSED AREA: CAFETERIA



FOCUSED AREA: SHELTER



FOCUSED AREA: RECEPTION



Elena Seleznjova



As a designer, I am passionate about creating environments that have a distinct energy and encourage people to experience pleasure and tranquility, whether they are working or relaxing. I aim to design aesthetically pleasing spaces that seamlessly combine comfort, functionality, and sustainability. My priority is to cultivate an environment that not only supports but also deeply nourishes mindfulness and well-being. To realize this vision, I am drawn to biophilic design, which takes advantage of its natural capacity to improve our relationship with nature, enhance our mental landscape, and promote a more profound sense of self-awareness.



Multifunctional Mental Health Facility for therapy and support to revive motivation, power, and purpose to get back to a healthy and active life. The primary focus is to provide support and assistance to a diverse range of individuals seeking mental health rehabilitation services.

Urban living impacts human mental health

Mental illness can lead to a variety of problems



FINISHES

F1 MATERIAL: Luxury Vinyl Tile 9"x48"
Collection - Biome, Design - Boreal
Stockholm: ST280,
MANUFACTURER: ARMSTRONG
FLOORING

F2 MATERIAL: : Luxury Vinyl Tile 18"x18"
Collection - Terra, Moonstone.
MANUFACTURER: ARMSTRONG FLOORING

F3 MATERIAL: : Luxury Vinyl Tile 18"x18"
Collection - Terra, Feldspar.
MANUFACTURER: ARMSTRONG FLOORING

F4 MATERIAL: Natural Tiles 6"x24"
Collection - LEDGESTONE, CARBON, Matte.
MANUFACTURER: M2 Tile & Stone

F5 MATERIAL: Stone Tile 24"x48"
Collection - IROC, BLACK, Matte.
MANUFACTURER: EURO Tile & Stone

F6 MATERIAL: Porcelain Tile 24"x48"
Collection - CEPPO DI GRES, Matte.
MANUFACTURER: EURO Tile & Stone

waterfall wall

MILLWORK:

Reception. Custom made.
Metallic Paint Silver.



FURNITURE:

COUNTER MATERIAL: Marble, Bianco
Raffaello
MANUFACTURER: OLYMPIA TILE &
STONE



ITEM: Chadwick Modular
Seating
MANUFACTURE:
HERMANN MILLER.



ITEM: Computer Apple Silver iMac, 18"
MANUFACTURER: APPLE



ITEM: Office Desk Chair Zody LX
MANUFACTURE: HAWORTH



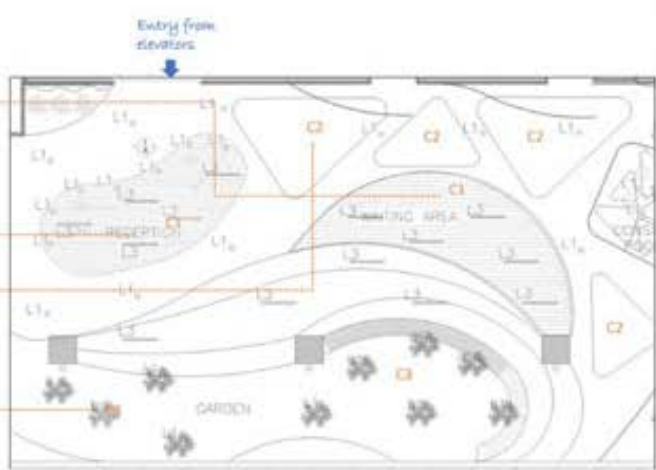
PRODUCT: Acoustical
Baffles in Organic Shape
MANUFACTURER:
ARMSTRONG



PRODUCT: Acoustical
Panels in a soft irregular
triangle shape
MANUFACTURER:
ARMSTRONG



PRODUCT: Acoustical
Clouds
MANUFACTURER:
ARMSTRONG



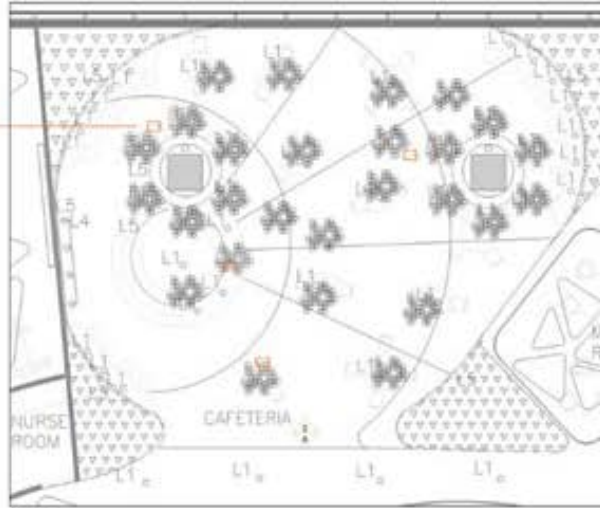
KEY AREA 2: CAFETERIA
RCP

The lighting fixtures have been thoughtfully integrated with the acoustical clouds, primarily serving a functional purpose by providing task lighting. This strategic placement is particularly significant because the design elements and aesthetic features are primarily represented by the intricate details on the ceiling.

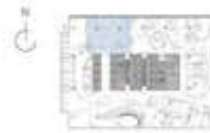
SUSPENDED CEILING:



PRODUCT: Acoustical Clouds
MANUFACTURER: ARMSTRONG



RCP



LIGHTING FIXTURES:



L1 - Architectural LED Cylinder Pendant Light



L4 - Architectural LED Track Light



L5 - 360° LED round luminous surface, uniform light emission.

Bar. Custom-made. Metallic Paint Silver.



COUNTER MATERIAL: Marble, Bianco Raffaello
MANUFACTURER: OLYMPIA TILE & STONE



ITEM: Bar Stool TILT
MANUFACTURER: HAWORTH



ITEM: Magis Table First
MANUFACTURER: HERMANN MILLER



ITEM: Ease Round Table
MANUFACTURER: EQ3



ITEM: Chair BAC ONE
MANUFACTURER: HAWORTH



Savaliya Dhvani



Albert Ensitine once said, 'Creativity is intelligence having fun.' And that has been my philosophy since I started designing. I was advised when I initially started my degree that 'form follows function', but as important as it is, every room should have a story and schools carry a piece of history in it. For future I plan to gain experience in commercial field of design while I pursue my masters in interior design.

UNIVERSAL DESIGN IN SCHOOL INFRASTRUCTURE

Buildings for schools that are constructed with Universal Design in mind are guaranteed to be accessible to all children, regardless of their diverse ability. Accessible washrooms, stairways, wide doorways, and ramps all contribute to an inclusive space that encourages equality.

BIOPHILIC DESIGN FOR ENHANCED LEARNING ENVIRONMENTS

Adding components of Biophilic Design to the educational setting benefits staff and students' health. A more peaceful and stimulating environment can be created in classrooms and common areas by bringing in natural light, utilizing natural materials, and adding plants. This promotes a healthy and effective learning environment in addition to improving the school's design.

SOCIAL RESPONSIBILITY IN INCLUSIVE EDUCATION

Canada's dedication to social responsibility in education can be shown by the integration of biophilic design and universal design in schools for children with disabilities. The school should promote equality, respect, and concern for every student by creating a welcoming and accessible learning environment. It helps kids with disabilities feel like they belong and enhances their intellectual and emotional growth.

THESIS STATEMENT / PROJECT SCOPE

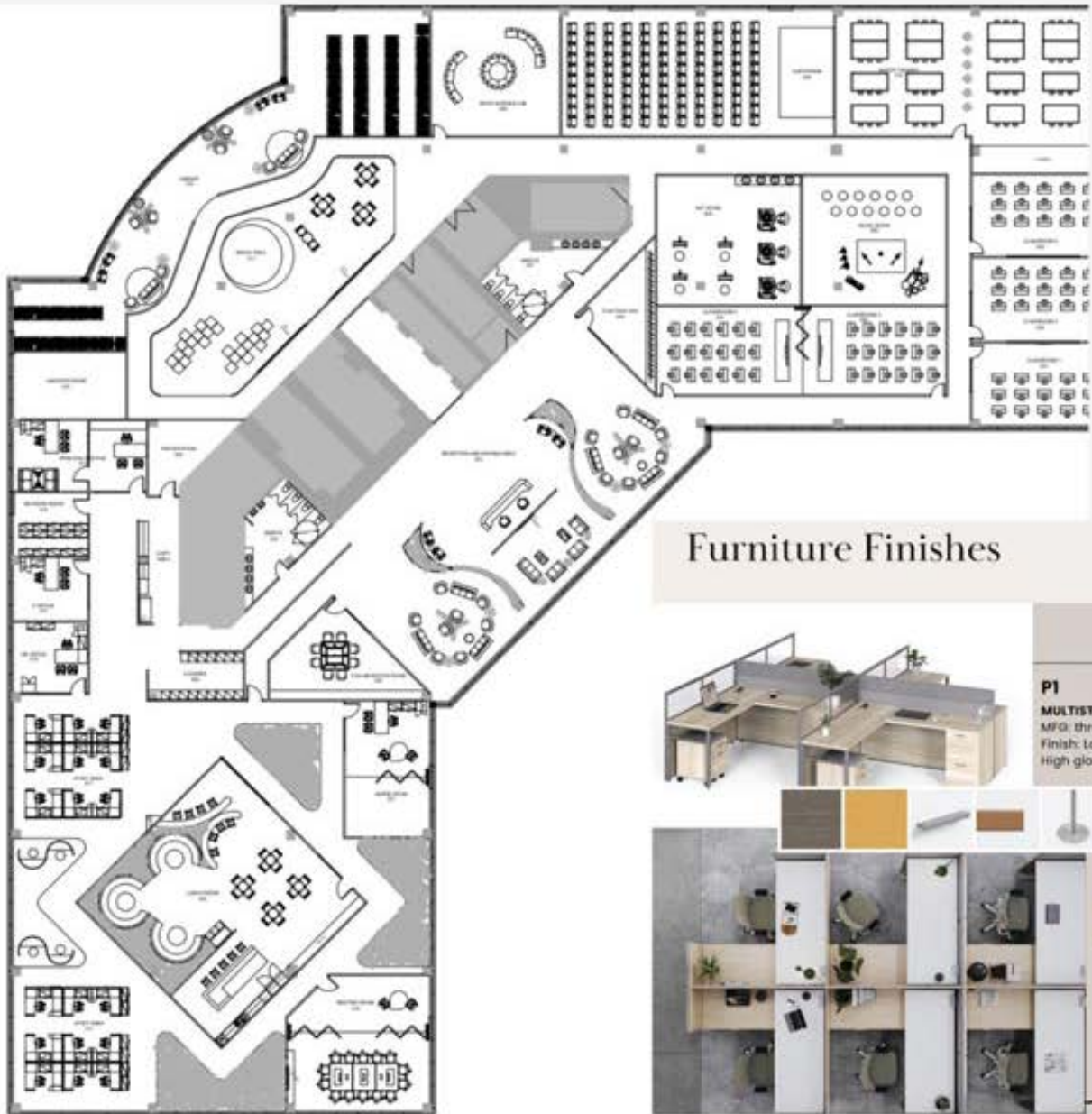
Acceptance Playful Unpredictable Everlasting Curiosity

Peace can be found in unexpected places. Just as thunderstorms may seem chaotic and frightening, they also hold a sense of natural order and beauty.



Acceptance Playful Unpredictable Everlasting Curiosity

The thesis project focuses on interior design of **School for Kids with Dual-Sensory Disability**. Lack of accessibility and inclusivity in school buildings, which limits the academic performance of kids with disabilities, is the issue that needs to be fixed. This project's objective is to demonstrate how interior design can be used to effectively create a learning environment that is accessible to everyone, regardless of their ability.



FOCUS AREA-STAFF ZONE



Furniture Finishes



P1
MULTISTATIONS OS
 MFG: three h
 Finish: Laminate & High gloss acrylic

P2
BuzziHug
 MFG: Buzzi Space
 Finish: Kvadrat
 Clara 2 0544

P6
BuzziMilk Counter
 MFG: Buzzi Space
 Finish: Kvadrat
 Clara 2 0544



P7
Sayl Chair
 MFG: Herman Miller
 Finish: Onyx



FOCUS AREA-CLASSROOM



Furniture Finishes

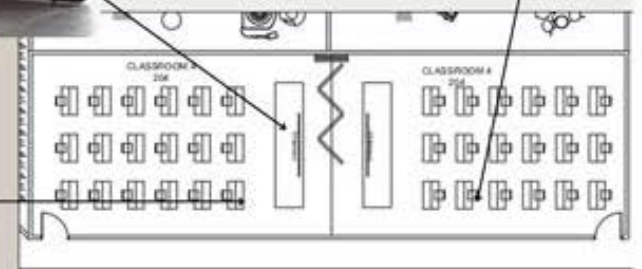
P4
ON-SITE
MFG: three h
Finishes: Ashed Oak, M2002
Touchable Felt: Marble



P5
Aside Chairs
MFG: Herman Miller
Finish: Medley, Trail,
ISA02



P3
Everywhere Tables
MFG: Herman Miller
Top Finish: Woodgrain Laminate,
Phantom Icon, L3H
Base Finish: Metallic Bronze, SH



FOCUS AREA-RECEPTION



Lighting Fixtures

L1

FLUTE
MFG: Zaneen
Finish: R00 -
Rose Gold &
GBN Green



L4

Bulley
MFG: lumens
Finish: Gray
Metal



L6

Fold
MFG: Zaneen
Finish: GBN
Green



L5

FCube2E
MFG: Lumens
Finish: Chrome



L10

BuzzJet
MFG: Buzz Space
Finishes: Felt,
Color: Cherry Blossom



L2

Marbles
MFG: Yello Goat
Design
Finish: Glass

